

**CERTIFIED LAND CORNER RECORDATION**

DESCRIPTION OF CORNER EVIDENCE FOUND, AND ORIGINAL RECORD (If known)

LOCATION

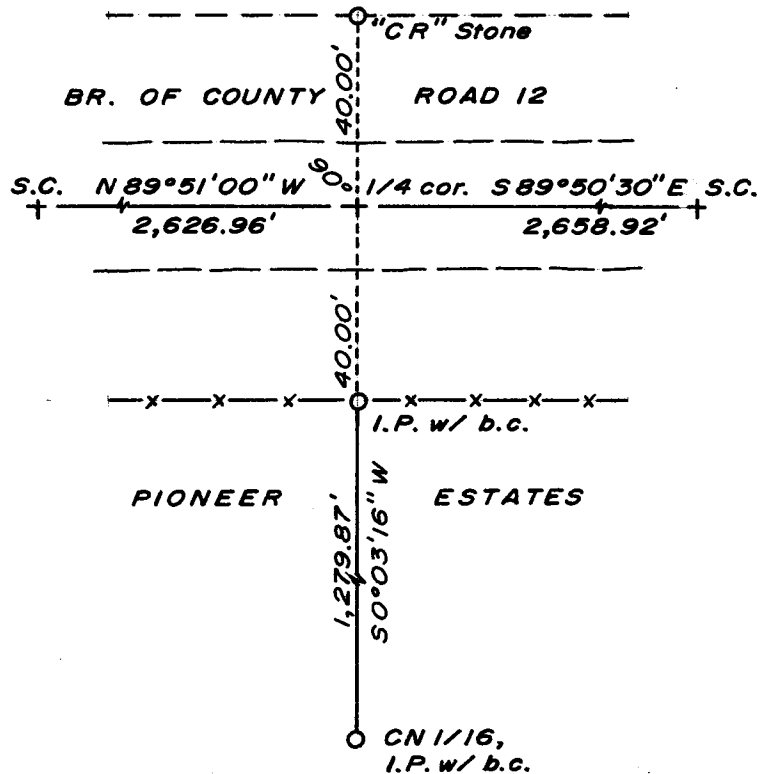
$\frac{1}{4}$  S.27  
 $\frac{1}{4}$  S.34  
 T.15N., R.67W.  
 6th P.M.

Found "C R" stone, in place, as shown by sketch. Stone set by C.E. Gattis in 1935 as described in County Surveyor's Field Book 44, pages 33-34.  
 G.L.O. record - Granite Boulder, 15 x 8 x 7 (1870).

DESCRIPTION OF MONUMENT AND ACCESSORIES ESTABLISHED TO PERPETUATE THE ORIGINAL LOCATION OF THIS CORNER:

At the corner: No monument set.  
 Accessories: "C R" Stone (Granite with ch. "+") bears N 0°09' E, 40.00 feet distant.  
 A  $1\frac{1}{2}$ " dia. x 30" long iron pipe with brass cap, set and stamped as a Witness Corner, bears S 0°03'16" W, 40.00 feet distant.

SKETCH, WITH COURSE AND DISTANCE TO ADJACENT CORNER IF DETERMINED IN THIS SURVEY.  
 (May Sketch or Paste Reproduction on Reverse Side.)



Brass cap set 4" above ground.

Brass cap stamped:

T.15N. R.67W.  
 $\frac{1}{4}$  S.27 W.C.  
 S.34

LS 519 1974

Basis of Bearing - By solar observation.

I, R.L. Hudson certify that I have carefully performed ~~or reviewed~~ the work done on the diagrammed corner as reported on this recordation form and approve the same.

R.L. Hudson  
 Signature of Surveyor

Wyoming L.S. No. 519  
 Registration No.

STATE OF WYOMING,  
 Office of Clerk and Recorder,  
 County of Saramie

This "corner record" was filed for record on the 24 day of June, 1974, was noted on the cross-index plat and is assigned page No. \_\_\_\_\_, in book No. \_\_\_\_\_.

John B. Huismann  
 County Official

Cross Index No. <u>415</u>	T. <u>15</u>	R. <u>67</u>	<u>6</u> Mer.
_____	T. _____	R. _____	Mer.
_____	T. _____	R. _____	Mer.
_____	T. _____	R. _____	Mer.
_____	T. _____	R. _____	Mer.
_____	T. _____	R. _____	Mer.
_____	T. _____	R. _____	Mer.

Photographed   
Indexed   
Filed   
Assessor

The State of Wyoming } SS  
County of Laramie

This instrument was filed for record  
at 1053 o'clock A M. on the  
24 day of June  
A. D. 19 24 and duly recorded in  
Book \_\_\_\_\_ on page \_\_\_\_\_

*John B. Stillman*

County Clerk & Ex-Officio Register of Deeds  
By JP Deputy